

Over the years, I have collected several .LSP routines (and one .VLX) that my customers find very useful. To have these routines available every time you are in AutoCAD, they should be added to the **Startup Suite**.

Saving the Files

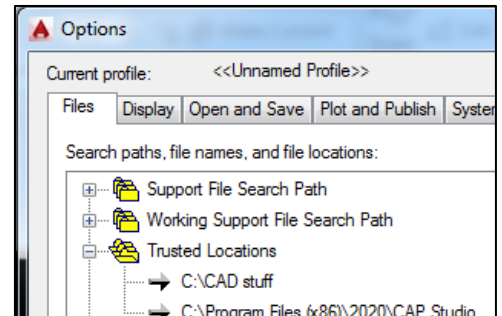
First, some of my customers have found that when the files are saved to a network location, they don't always work. Also, if you use a laptop and these files are on the server, you would have to remote in, which is not always timely.

Optimally, you should save the files to **C:\Program Files\Autodesk\AutoCAD 201x\Support**. This works best because that path is already on the Support File Search Path list and will not require any additional setup.

If you have AutoCAD 2014 or later, and you save the files to another location on your C:\ drive, you will need to add that path to the Trusted Locations. Otherwise, you may encounter the 'File Loading – Security Concern' warning. To move past that error, click *Load*.

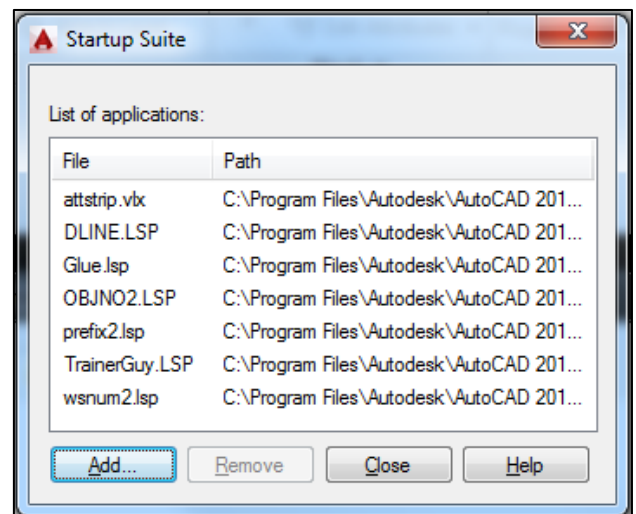
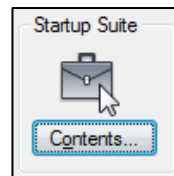
Go into *Options >Files* tab, then expand *Trusted Locations*. If no path is displayed, double-click the empty slot, then click *Add*, then *Browse*.

Navigate to and select the folder where you saved the files, then click *OK*. When you get the notice regarding Read-Only, click *Continue*.



What To Do With These Files

- 1.. Download and unzip each of these files in AutoCAD's **..\Support** folder, or a folder of your choice.
- 2.. In AutoCAD, go to *Tools/Load Application*, or type **AP**.
- 3.. Click the suitcase icon at the bottom to open the Startup Suite dialog box.
- 4.. Click *Add*, then navigate to the .LSP files in the **..\Support** folder.
- 5.. Select the files (use *Ctrl* to select more than one).
- 6.. After you have selected them, click the *Add* button to return to the Startup Suite dialog where you will see them listed.
- 7.. Click *Close*, then close out of the Load Application dialog box.
- 8.. **To make them work, you will need to close and re-launch AutoCAD.**



What They Do

TRAINERGUY.LSP is a compilation of several one-line Lisp routines. To see them all, open TrainerGuy.lsp in Notepad. Enter the one or two characters that appear after the "Defun C:" text to launch the associated routine.

*Highlights (type the **bold** letters to run the routine):*

- TV** - Use this routine to tile the open drawings vertically.
- DE** - Use this to launch the Dist command with the Endpoint osnap for each pick.
- UA** - This routine will bring the selected line to horizontal in the drawing window along with the rest of the drawing. Works great when you want to work in a room at an odd angle but bring it square so you don't have to keep turning your head. You can then work on the drawing with Ortho on, too.
- UW** - This one puts the UCS back to World and takes the drawing with it.

GLUE.LSP creates a single line from two disconnected lines, such as a wall/door opening that's been removed.

ATTSTRIP.VLX strips the attributes of the selected attributed blocks (such as from CAP Designer), but retains the integrity of the block itself. The .VLX extension means it is a compiled Lisp routine that was created using Visual Lisp and should be treated the exact same way as a .LSP.

DLINE.LSP creates parallel lines. It was on the R11 Bonus CD, was part of R12, then was mysteriously dropped when Mline appeared in R13. And AutoCAD **LT** has had the Dline routine as a staple for years.

Three key features:

Width - This sets the distance between the parallel lines.

Dragline - Think 'justification'; Right, Center, or Left based upon the direction you are going.

Offset - This enables you to offset the Start point of a new Dline (it's not the Offset command).

You get 3 prompts:

- 1.. '*Offset From*'. Pick a point.
- 2.. '*Offset Toward*'. Turn on Ortho (if it isn't already) and pick a point in the direction where the start point for the new dline will be placed relative to the offset point.
- 3.. '*Distance*'. Now you can enter how far the start point is for the new dline from the offset point in the direction specified.

For more on using Dline, see [Michael's Corner August 2003 \(making walls\)](#), [September 2005 \(using Dline to cut door openings\)](#), and [April 2008 \(adding Dline to the tool palette\)](#). In *The AutoCAD Workbench, 2nd Edition*, it's on p. 63.

NUMBERS2012.ZIP contains three auto-numbering routines: **Wnum2.LSP**, **Objno2. LSP**, and **Prefix2. LSP**.

MEMO: Please note that these numbering routines have been updated to allow for the entry of an increment, i.e., KEY-200, KEY-202, KEY-204, etc., as well as for leading zeros, i.e., 001, 002, etc. Since each of them are launched with their original command – **OBJNO**, **WSNUM**, or **PREFIX** – after downloading and installing (per the directions above), delete any old WSNUM.LSP, OBJNO.LSP, and PREFIX.LSP files so there won't be any conflicts.

Notes About the Numbering Routines

- A.. Each one of the numbering routines creates Dtext, not Mtext.
- B.. The numbers are created on the current layer in the current text style, so set those up first.

MAJOR NOTE:

*Be sure the current Text Style's Height is set to **0** before running any of these three routines.*



What They Do

OBJNO – This is a sequential numbering routine. You now have the option of leading zeros; just follow the prompts ...

```
Numbering with leading zeros? (Y or N) Y
Enter First Number: 010
Enter the number of digits to be displayed (max 5): 3
Enter Text Height: 6
```

PREFIX - Enter a prefix, the starting number, the increment, then the text height. The prefix hugs right up to the number ala **WS101**, **WS102** or **KEY-60**, **KEY-61**, etc.

WSNUM - Similar to Prefix, but this one puts a space between the prefix and the sequential number, **FR 355**, **FR 356**, etc. When prompted "Increment numbers by ?" enter the desired increment. You can also specify the height using decimals.

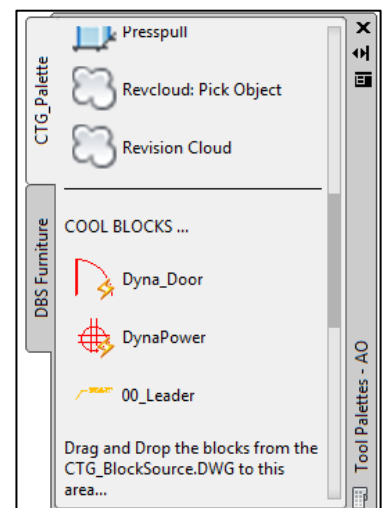
Michael's Tool Palette

These files contain the contents of my tool palette. I would recommend that you copy and unzip this file into AutoCAD's **..\Support** folder just as you did with the other downloads.

CTG_XTPandDWG.ZIP

[contains *CTG_Palette.XTP* and *CTG_BlockSource.DWG*]

MEMO: The *CTG_BlockSource.DWG* contains blocks that will be added to the tool palette. It would be best to save this .DWG file to a location and leave it; someplace where you won't be inclined to move it.

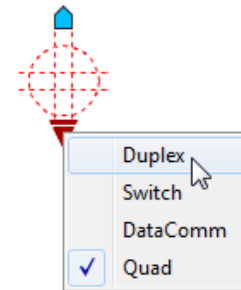
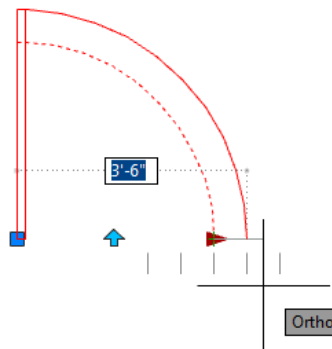
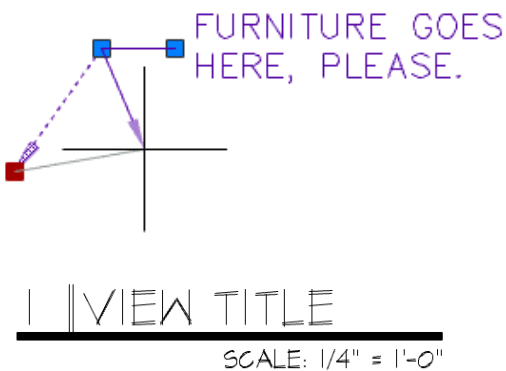
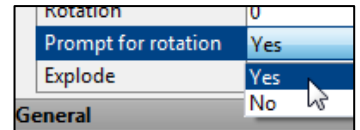


How to Make These Work

- 1.. In AutoCAD, open the Tool Palette [Ctrl + 3], then right-click on the title bar and click *Customize Palettes*.
- 2.. On the left side, right-click anywhere in the list, then click *Import*.
- 3.. Navigate to where you copied the CTG_Palette.XTP in step 2, above, and *Open* it.
- 4.. Now open CTG_BlockSource.DWG.
- 5.. Click, breathe, drag n' drop each block - one at a time - onto the palette.

NOTES on the Blocks:

- A.. 00_Leader:** After you put it on the palette, right-click on it, then click *Properties*. Set the *Explode* value to "Yes".
- B.. DynaDoor:** After you put it on the palette, right-click on it, then click *Properties*. Set the *Prompt for Rotation* to "Yes".
- C.. DynaPower:** This one is OK, as is.
- D.. DynaLabel:** It's the very small white object (to the right of Dyna_Power). It is intended to be inserted into a layout (Paper space), not in Model space.



MEMO: Use the RENAME command [Alias: REN] to replace the various prefixes of **00_*** to a prefix for your company.



michael.beall@cadtrainerguy.com

502.500.2267